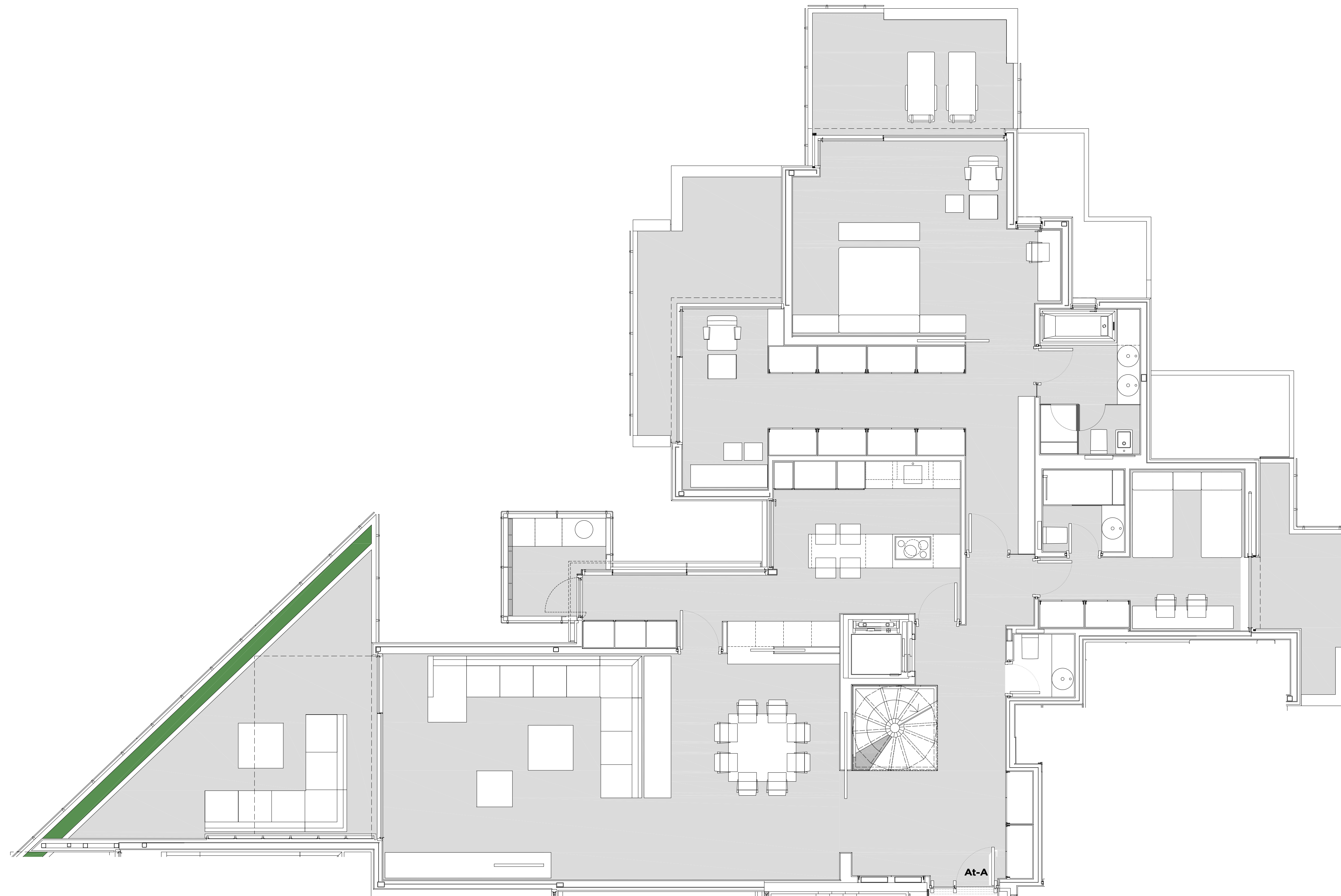
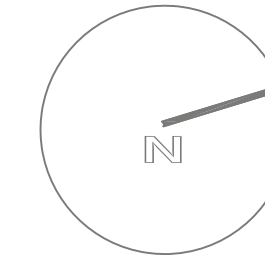


VIVIENDA ÁTICO A - NIVEL BAJO

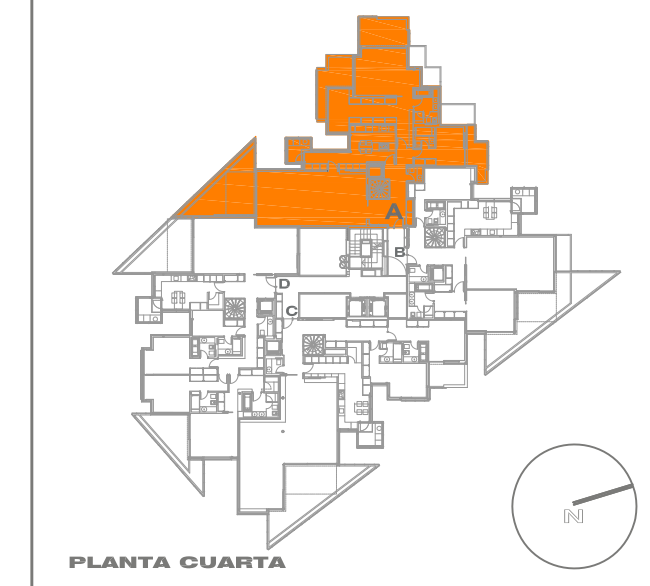
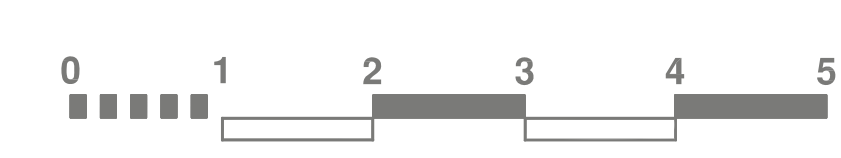
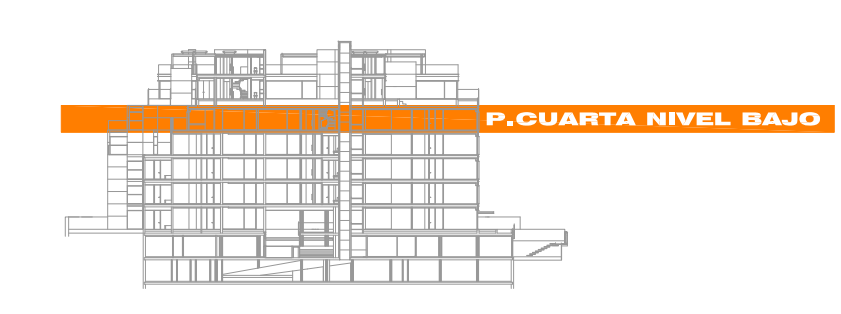


At-A



- VIVIENDA ÁTICO A
- SUPERFICIE VIVIENDA INCLUIDAS ZONAS COMUNES: 411,91 m²
- SUPERFICIE TERRAZA: 184,02 m²

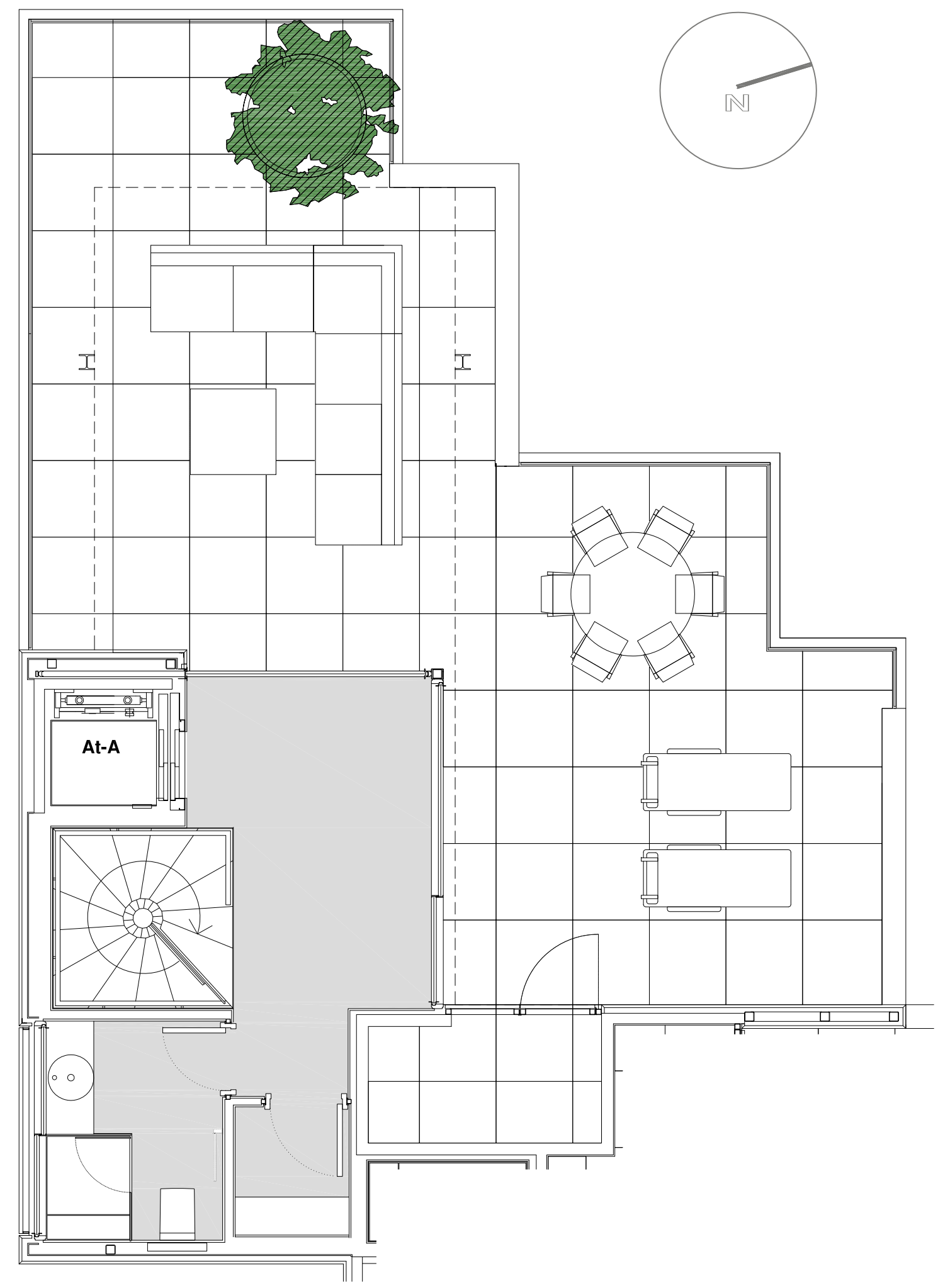
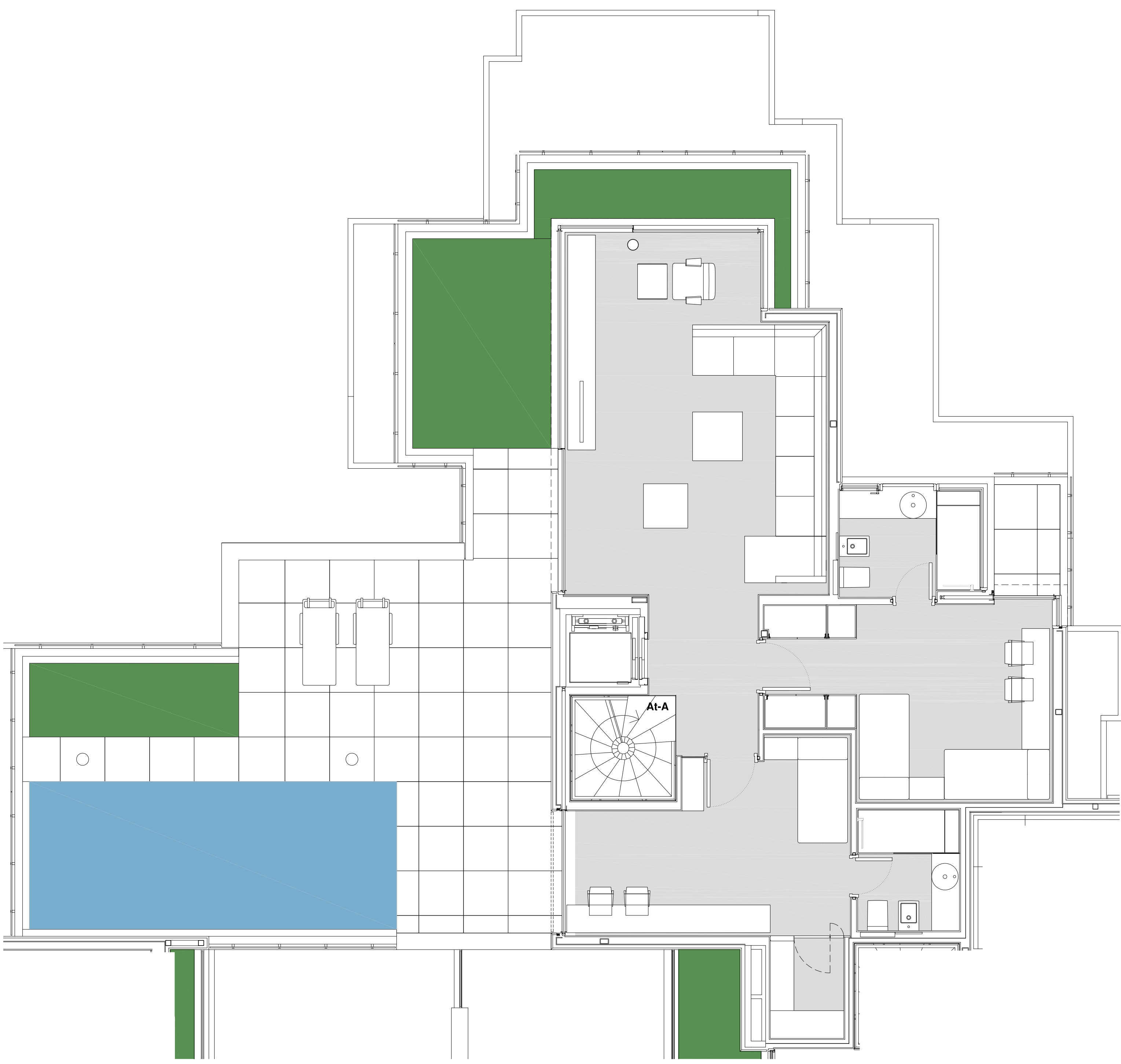
AVD. DE LOS MADROÑOS 29



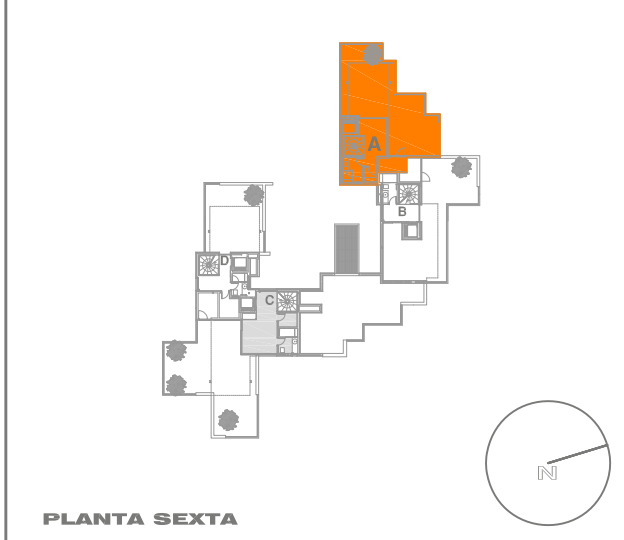
PLANTA CUARTA

VIV. ÁTICO A - NIVEL ALTO

SOBREÁTICO



AVD.DE LOS MADROÑOS 29

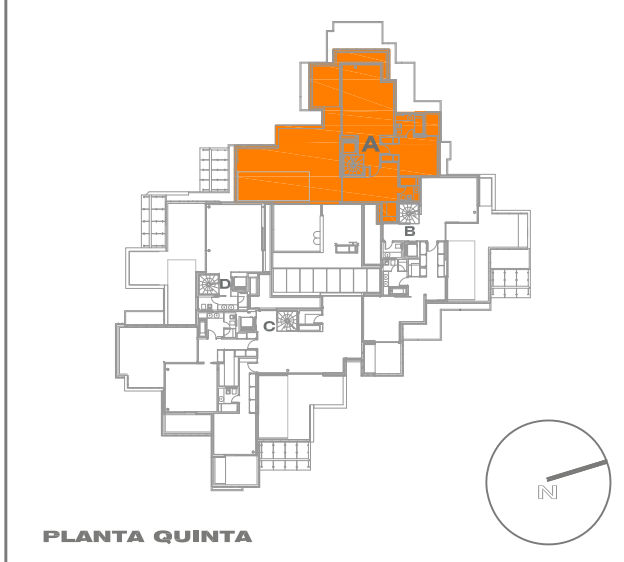


PLANTA SEXTA



- VIVIENDA ÁTICO A
- SUPERFICIE VIVIENDA INCLUIDAS ZONAS COMUNES: 411,91 m²
- SUPERFICIE JARDÍN: 184,02 m²

AVD.DE LOS MADROÑOS 29



PLANTA QUINTA

P. SEXTA SOBREÁTICO
P. QUINTA NIVEL ALTO



PLANTA QUINTA Y SEXTA