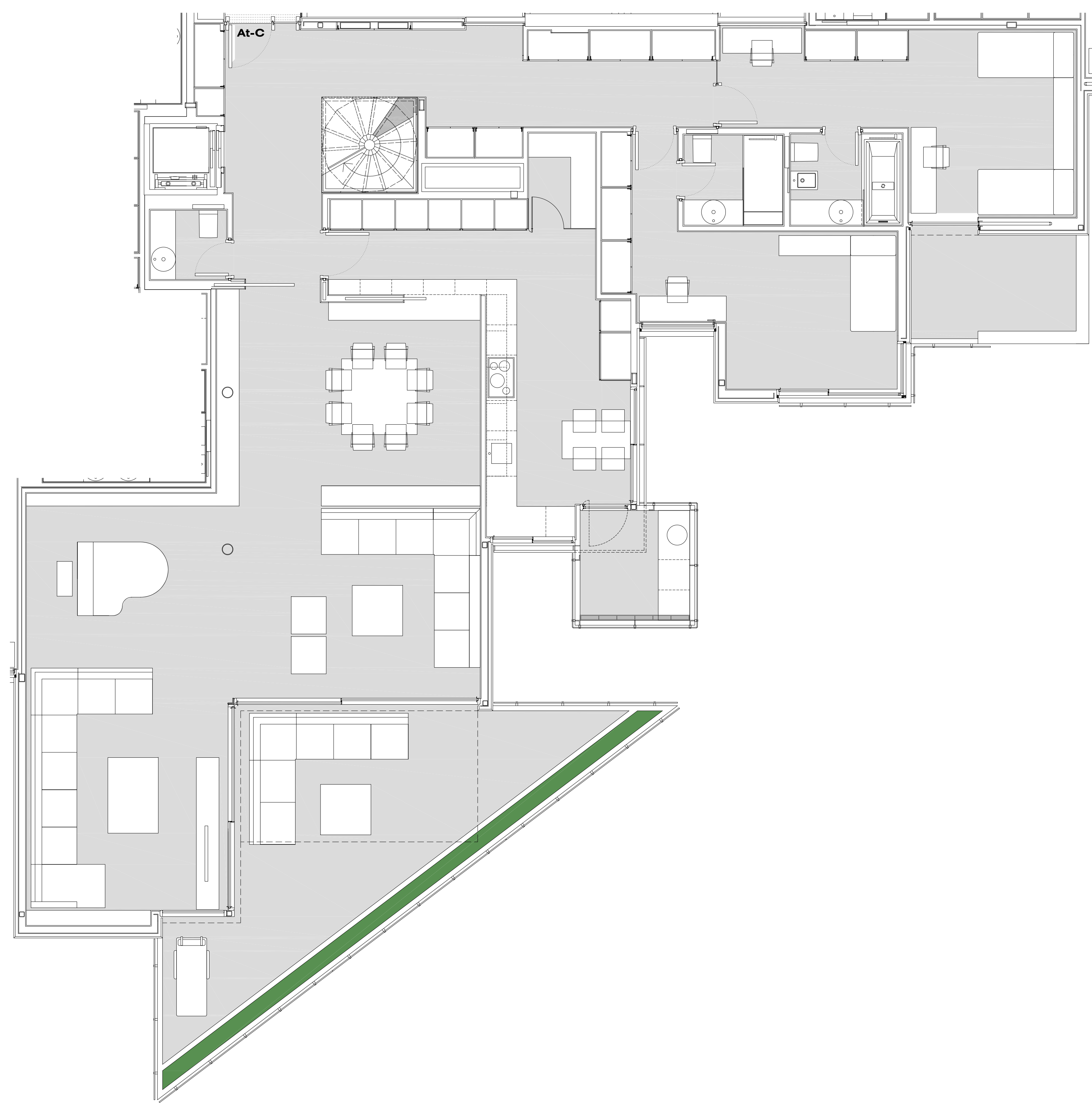
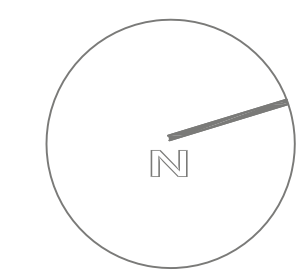
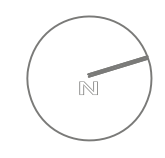
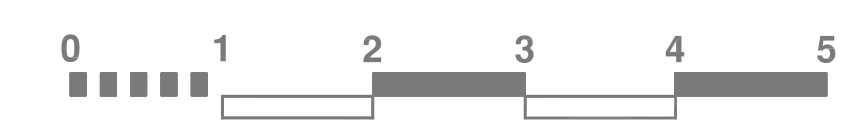
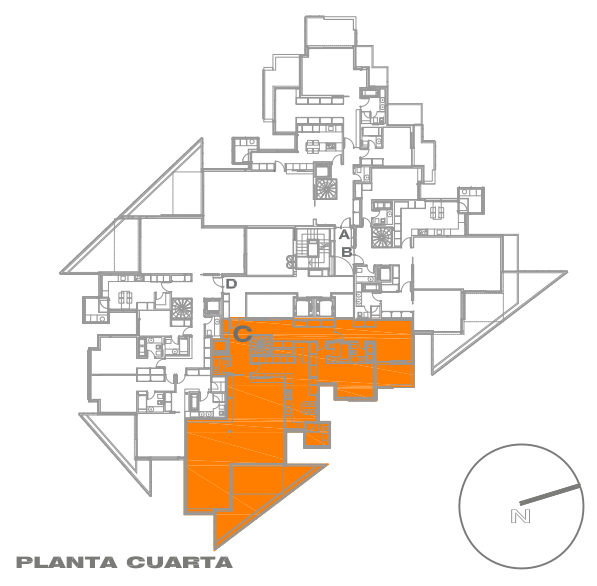
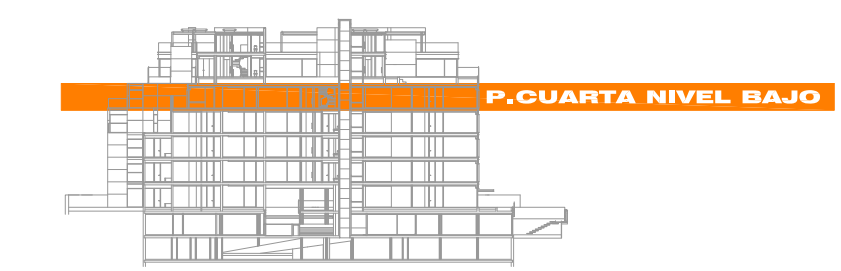


VIVIENDA ÁTICO C - NIVEL BAJO

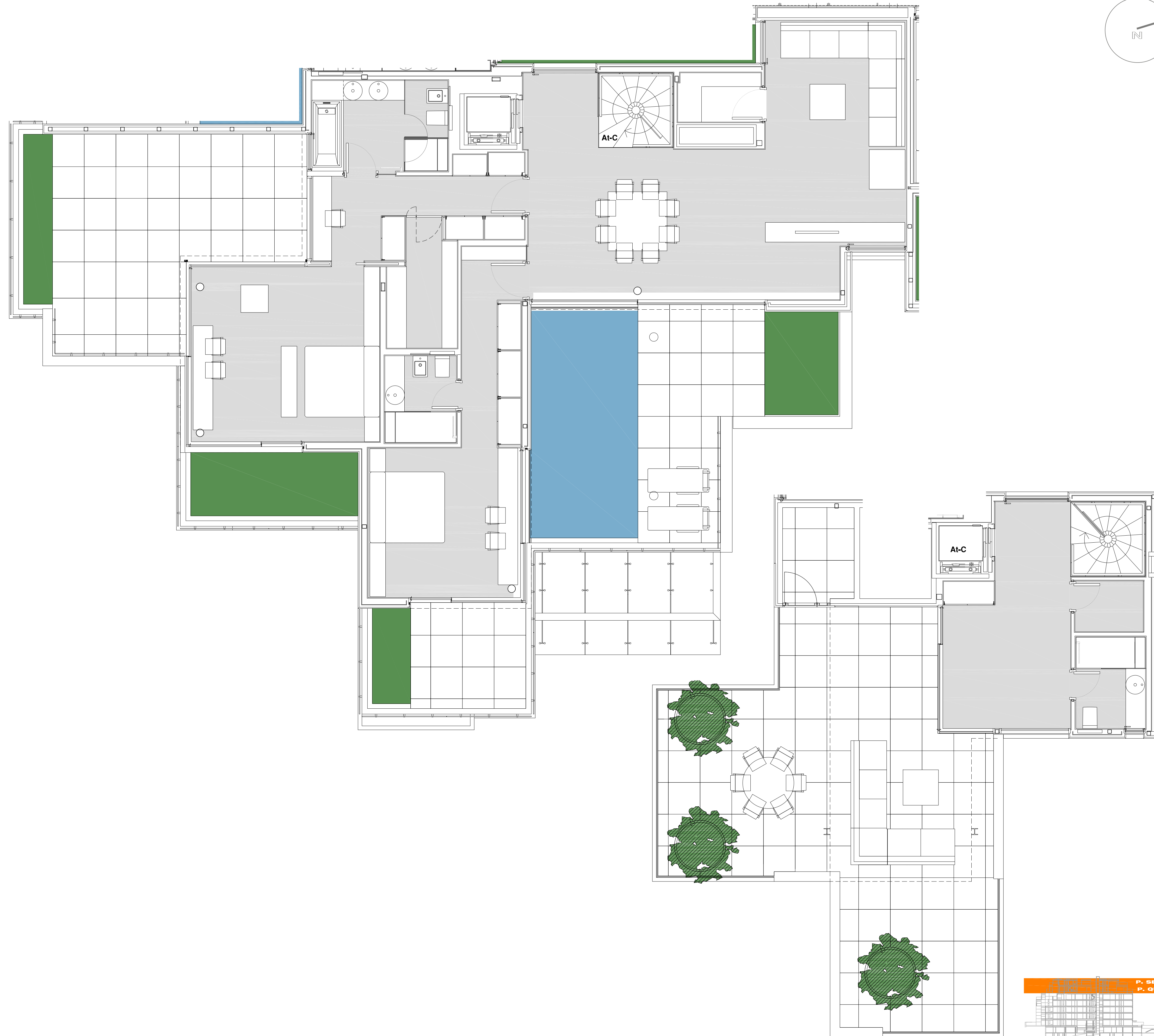


• VIVIENDA **ÁTICO C**
• SUPERFICIE VIVIENDA
COMUNES: **486,16 m²**
• SUPERFICIE
TERRAZA: **194,29 m²**

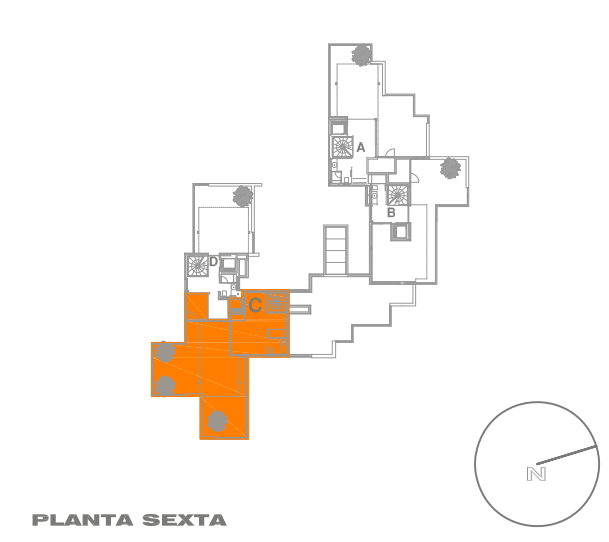
AVD. DE LOS MADROÑOS 29



PLANTA CUARTA



AVD.DE LOS MADROÑOS 29

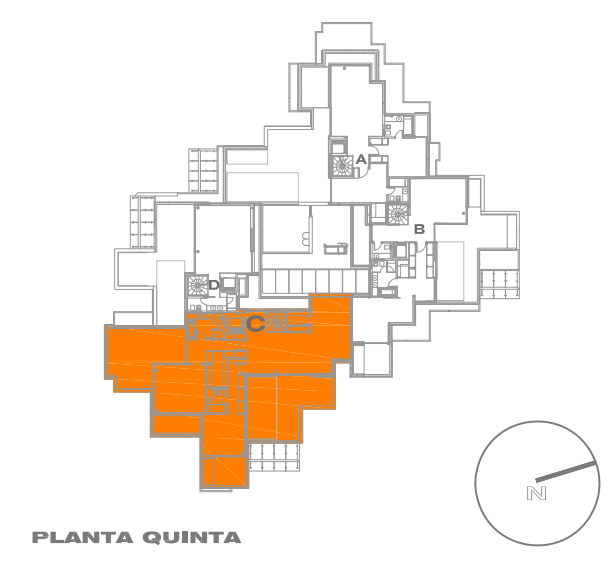


PLANTA SEXTA



- VIVIENDA ÁTICO C
- SUPERFICIE VIVIENDA INCLUIDAS ZONAS COMUNES: 486,16 m²
- SUPERFICIE JARDÍN: 194,29 m²

AVD.DE LOS MADROÑOS 29



PLANTA QUINTA

